



Holmdene Avenue, Herne Hill, SE24

£450,000

2 bedroom flat for sale

Property Details

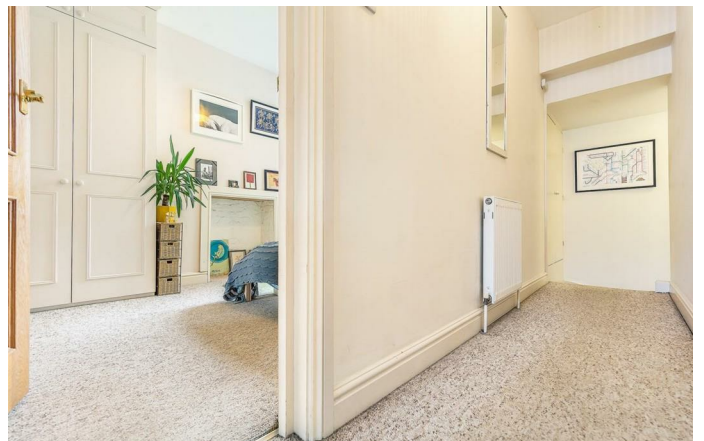
A bright two double bedroom flat on the first floor of an imposing Victorian property perfectly positioned within close proximity to the beautiful greenery of Brockwell Park. This flat comprises a spacious open plan reception room, with a lovely bay window that allows natural light to flood the room. The kitchen is contemporary and there is plenty of space for a dining table. Down the hallway, two comfortable double bedrooms share a modern bathroom. The flat is neutrally decorated, ready for a buyer to move in straight away and stamp their own mark over time. Chain-free.

Features

- Chain free
- Victorian
- Central location
- Bright and airy throughout
- Close to Brockwell park

Council tax band C

EPC rating C (79)



Holmdene Avenue, Herne Hill, SE24



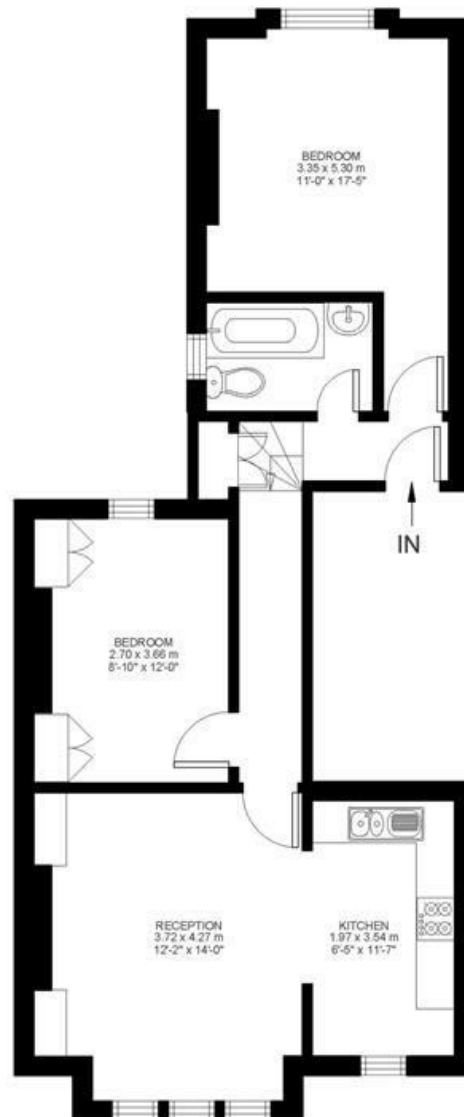
2 Bed flat

Approx internal area:

635 sqft 59 sqm

While we do try our very best, floor plans are produced as a guide only and we take no responsibility for the precise accuracy with which any property is represented

Holmdene Avenue



First Floor



Holmdene Avenue, Herne Hill, SE24

